

Lamello

## Profila E/Profila P

Finishing of edges in Lamello quality

Milling and bevelling of panels.  
Finishing of edges and corners in wood,  
plastics, resins and laminates.

Profila E



Profila P

With the compliments of:

**Light-weight, handy design**

For easy, one-handed work

**Precise adjustment of milling depth  
by rotating the base plate**

Handy, fast, continuously adjustable, accurate

**Large base plate**

Uneven patches on the guiding  
surface are no problem

**High motor speed**

Accurate milling quality guaranteed

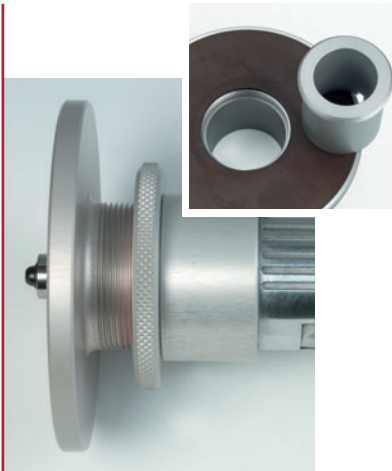
**Available with pneumatic or  
electric motor, with collet chucks  
diameter 6 mm, 8 mm or 1/4"**

You chose your preferred version



**Small, variable  
opening for router,  
34 or 25 mm**

Highest possible safety  
also when using various  
routers



**For flush milling of protruding PVC edges**



Profila E special

Base plate with open throat  
A supplement to the Profila E

Technical Data:

<p><b>Profila E:</b></p> <p>Power: 500 W Voltage: 120 and 230 V Speed: 31'000 rpm Cutter: HW-Edge cutter, radius 3 mm, shaft Ø 6 mm Base plate: Ø 100 mm with drilled hole 34 mm, reducer 25 mm Weight: 1,8 kg Art. No.: 111961</p>	<p><b>Profila E special:</b> Art. No.: 111962</p>	<p><b>Profila P:</b></p> <p>Power: 400 W Operating pressure: max. 6,5 bar Compressed air requirem.: 500–600 l/min Speed: 22'000 rpm Cutter: HW-Edge cutter, radius 3 mm, shaft Ø 6 mm Weight: 0,8 kg Art. No.: 111953</p>	<p><b>Scope of supply:</b></p> <p>Machine complete with HW-Edge cutter Profila P (without connector, connection 1/4" / 13.16 mm) (Spiral hose as an accessory) Collet chucks 6 + 8 mm Set of tools Instruction manual Carrying case</p> <p><b>Product guarantee:</b></p> <p>1 year in case of malfunction due to improper manufacture or defective materials</p>	<p><b>Special accessories:</b></p> <p>Collet chuck 1/4" (6.35 mm) for Profila E (230 V), Art. No. 251961 Collet chuck 1/4" (6.35 mm) for Profila P, Art. No. 251967 Spiral hose Ø = 12 mm, complete, Art. No. 251953 Spiral hose Ø = 8 mm, complete, Art. No. 251957 Base plate with gap, Art. No. 121982</p> <p><b>Guarantee of delivery:</b></p> <p>10 years for spare parts and accessories from last date of manufacture</p>
---	---	---	--	--



Producer:  
**Lamello AG**  
**Verbindungstechnik**  
Hauptstrasse 149  
CH-4416 Bubendorf  
Tel. +41 (0)61 935 36 36  
Fax +41 (0)61 935 36 06  
E-Mail info@lamello.com  
www.lamello.com