

## Lamello Glueing System



Equipment ready



Attach required nozzle



Apply glue



Clean nozzle

## Glue application precisely where you want and nowhere else!

With Lamello  
Glueing System



### Economical

- » Only as much as necessary «
- Reduce glue wastage: lower costs, protect the environment, increase joint quality



### Dosable

- » Simply apply the desired amount «
- Optimise glue application: precisely set the ideal quantity.



### Exact

- » Exactly where I want it «
- Improve quality: precisely apply in the correct position, optimise joint strength



### Efficient

- » As fast as possible «
- Save time: apply efficiently with the correct nozzle, minimise cleaning requirement

Without Lamello  
Glueing System



## Glue applicators

- **Stainless steel pressure tank**  
guarantees a long service life
- **Minimal cleaning required**  
due to the user-friendly design  
(only pistols ends and nozzles)
- **Single pump**  
suffices to expel the entire  
10, 5 or 3 kg capacity (even after  
an extended time period)
- **Complete and ready to use**  
ready with standard equipment
- **Modularly expandible**  
flexibly expandible according  
to your needs

### LK 10

Capacity: 10 kg  
Size: Ø 360 x 530 mm  
Art. No. 502010



### LK 5

Capacity: 5 kg  
Size: Ø 285 x 465 mm  
Art. No. 502005

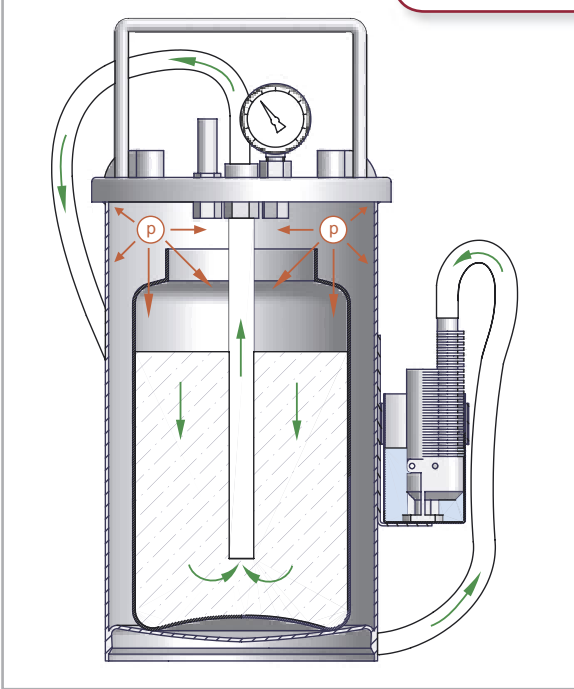


### LK 3

Capacity: 3 kg  
Size: Ø 285 x 340 mm  
Art. No. 502003



How it works



Lamello Video clips  
→ [www.lamello.com](http://www.lamello.com)

### Scope of delivery

Glue applicator  
LK 3, LK 5 and LK 10:

- + Stainless steel pressure tank
- + Pressure gauge and safety valve
- + Inner plastic glue container
- + Water container for glue pistol
- + Hose Ø 10 mm, length 4 m
- + Glue pistol LK 0
- + Pointed nozzle
- + Pump hose

## Glue pistols

### Glue pistols for various applications

- + Glue quantity steplessly dosable
- + Drip free and simple to clean
- + Bayonet coupling for speedy nozzle changing
- + Easy to service



**LK-110 Glue pistol**  
pneumatic with controlling  
station, release at pistol  
Art. No. 512230



**LK-111 Glue pistol**  
pneumatic with controlling  
release through work piece  
Art. No. 512240

### Special features for LK-110 and LK-111

- + Precise dosage of the desired glue quality
- + Stepless adjustment of the glue amount at the pistol
- + Stepless adjustment of the duration of glue flow using the controlling device

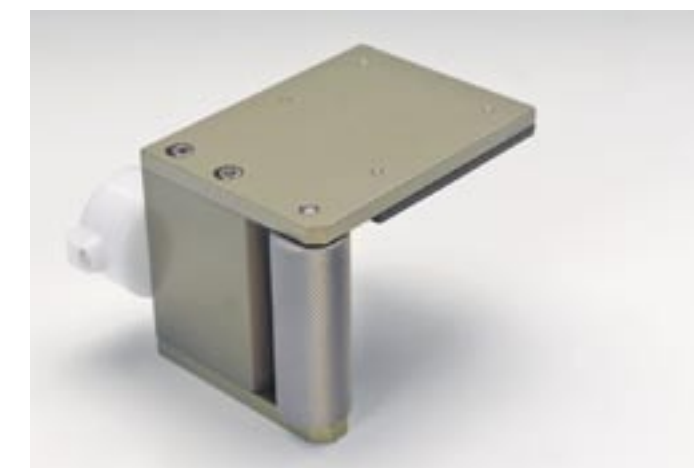


**LK-0 Glue pistol**  
For manual operation  
Art. No. 512200



**LK-100 Glue pistol**  
For pneumatic operation  
Art. No. 512210

## Glue nozzles



### Advantages of the standard Lamello nozzles

Lamello glue nozzles are anodised, coating them with a hard surface, 3/100 mm thick. This results in the following outstanding properties:

- **Resistance to wear**
- **Smooth gliding surface**
- **Surfaces easy to clean**

Speedy nozzle changes are made possible with the Bayonet coupling.

## Our most desired nozzles

### Nozzles for edges

Examples: Brushes, adjustable nozzle, adjustable edge roller, pointed nozzle, round nozzle

<b>Adjustable nozzle</b> , width 10 - 22 mm	512422
<b>Adjustable nozzle</b> , width 23 - 42 mm	512442
<b>Adjustable nozzle</b> , width 40 - 62 mm	512462
<b>Brush</b> , width 40 mm	512404

<b>Pointed nozzle</b> Ø 5/1,5 x 25 mm	512451
<b>Adjustable guide</b> for pointed -/ round nozzle	512425
<b>Round nozzle</b> Ø 5/4 x 30 mm	512454

Lamello Video clips  
www.lamello.com



### Nozzles for joints

Examples: Roller nozzle, slot nozzle, universal tongue, dowel nozzle, multidowel nozzle, Minispot-nozzle

<b>Roller nozzle</b> 25 mm, Ø 7 mm	512879
<b>Roller nozzle</b> 50 mm, Ø 7 mm massiv	512876
<b>Roller nozzle</b> 50 mm, Ø 7 mm	512875
<b>Universal tongue</b> 110 x 50 x 4,5 mm	512871

<b>Dowel nozzle double</b> , Ø *mm, A = 32 mm	512822
<b>Dowel nozzle</b> Ø 6 x 20 mm	512801
<b>Dowel nozzle</b> Ø 8 x 25 mm	512802
<b>Dowel nozzle</b> Ø 10 x 30 mm	512805
<b>Dowel nozzle</b> Ø 12 x 40 mm	512806

### Nozzles for grooves

Examples: Groove nozzle, U nozzle (glue outlets only in the groove), U nozzle with angled connector, T nozzle (outlets in the groove and on the surface), T nozzle with angled connector

<b>Groove nozzle</b> size 20	512845
<b>T-nozzle</b> with angled connector	513051
<b>U-nozzle</b> 4 x 8 mm	513011

### Nozzles for surfaces

Examples: Surface roller, brush, dowel nozzle

<b>Surface roller</b> , width 180 mm	512602
<b>Surface nozzle</b> 70 mm	512607
<b>Surface nozzle</b> 120 mm	512612
<b>Surface nozzle</b> 180 mm	512618

You will find more standard nozzles in our Lamello Catalogue.



Lamello Video clips  
www.lamello.com



## Customised nozzles according to your requirements

We specialise in the production of customised nozzles. For price enquiries please send an accurate and dimensioned drawing. For nozzle production we require an accurate wood sample including indication of the surface to be glued. Price and delivery time upon request.

<b>Profile edge nozzle</b> , according to the sample	512465
<b>Counter profile nozzle</b> according to the sample	512899
<b>Surface nozzle</b> according to the sample	512699
<b>Dovetail nozzle</b> according to the sample	512850
<b>Tongue nozzle</b> according to the sample	512855
<b>Window block</b> according to the sample, multiple tenons	512884



## Cleaning

Accessories for easy cleaning and storing of the nozzles:

<b>Water reservoir complete:</b> inside Ø 60 x 90 mm	533260
inside Ø 134 x 60 x 60 mm	533261
<b>Cleaning brush:</b> 16 x 35 mm, length 340 mm	533252
round Ø 6 mm, length 340 mm	533253
<b>Connector "3/4"</b> for water tap	533250
<b>Connector US</b> for water tap	533251
<b>Service container</b> , volume 4 litres	533255



## Helpful accessories

**LK Rolling base** 533201  
Allows pulling of the system with the hose of LK-5 and LK-3  
· Lowered platform for secure placement of the glue applicator  
· Dimensions 254 x 254 mm

**LK Rolling base with handle** 533204  
For LK-5 and LK-3  
· Rolling base including handle for pushing  
· Complete with water container and hook for hose suspension  
· Dimensions 254 x 254 x 820 mm

**LK Service carriage** 533205  
The mobile station for LK-10 and LK-5  
· Adjustable suspension rod for the nose  
· Incl. service container with handle, cover and mesh basket to submerge nozzles in water when not in use, volume 4 l  
· Dimensions 410 x 410 x 850 mm



Lamello

Swiss made

Manufacturer:  
Lamello Ltd  
Joining Technology  
Hauptstrasse 149  
CH-4416 Bubendorf  
Tel. +41 (0)61 935 36 36  
Fax +41 (0)61 935 36 06  
www.lamello.com  
info@lamello.com

Lamello

## Glueing System

An ingenious glueing system for strong joining – economical, ready to use, modularly expandible

